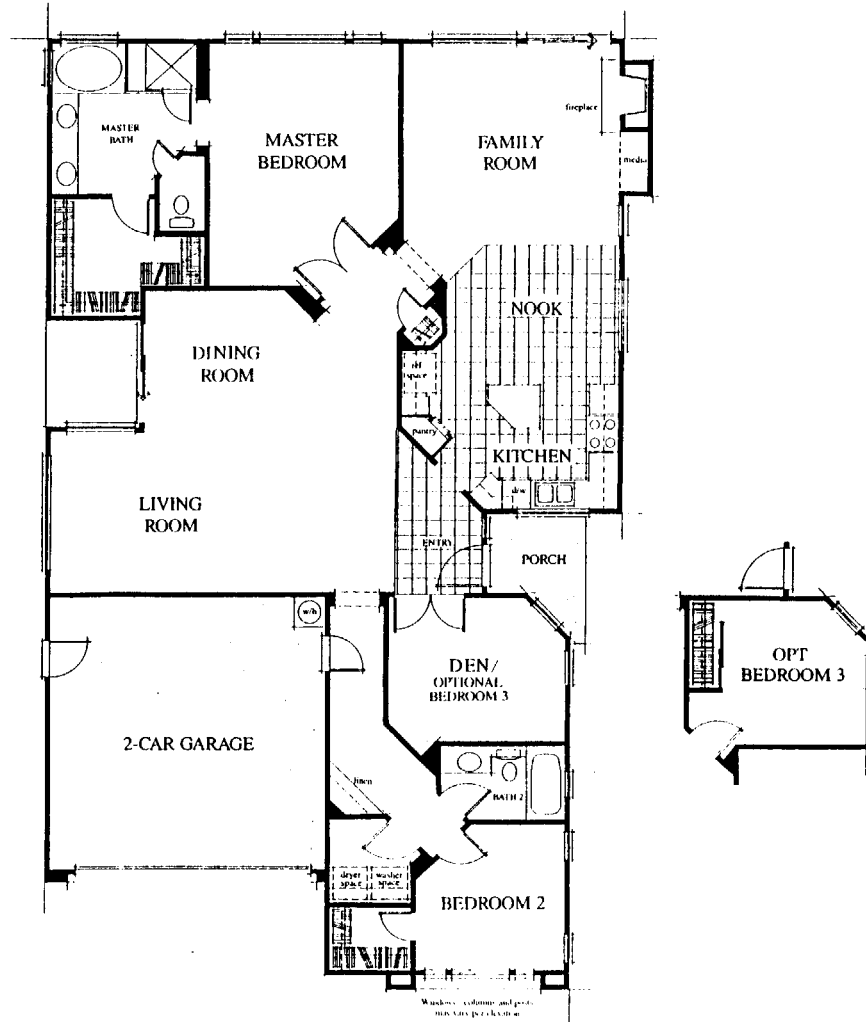


PALMIA VISTAS PLAN 3  
DETACHED HOME  
2 BEDROOMS PLUS DEN 2 BATHS  
1826 SQ.FT.



PRESENTED BY PALMIA REALES  
NICK NICHOLSON & SANDRA PIERCE  
(949) 580-4728

THE ABOVE FLOOR PLAN AND DESCRIPTION ARE PRESENTED FOR GENERAL INFORMATION ONLY AND DO NOT REPRESENT ANY PARTICULAR HOME ON THE MARKET AT THIS TIME. SQUARE FOOTAGE IS APPROXIMATE.