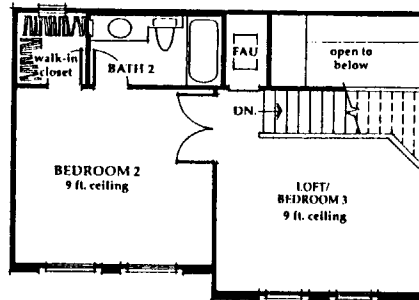
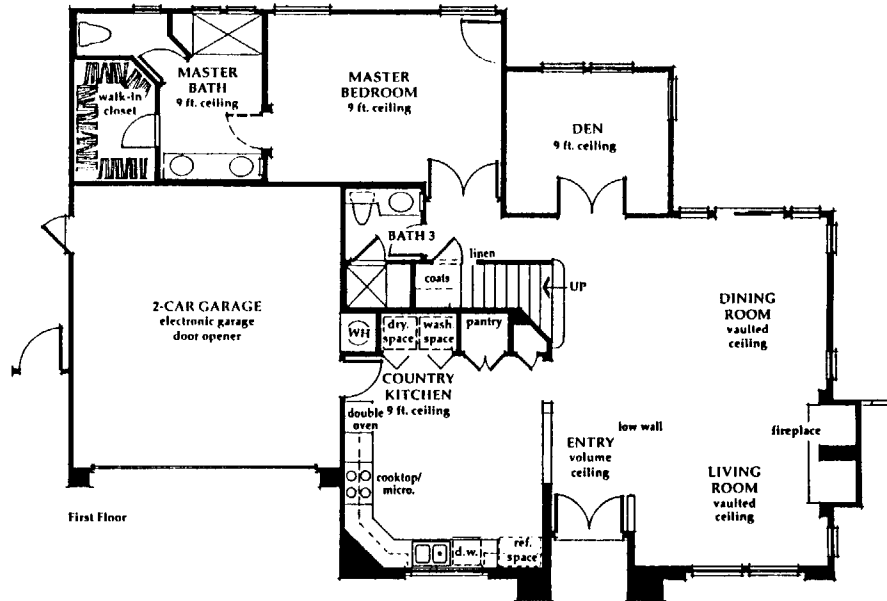


PALMIA VILLAS PLAN 4
DETACHED HOME
2 BEDROOMS PLUS LOFT 2.5 BATHS
1914 SQ.FT.



PRESENTED BY PALMIA RESALES
NICK NICHOLSON & SANDRA PIERCE
(949) 580-4728

THE ABOVE FLOOR PLAN AND DESCRIPTION ARE PRESENTED FOR GENERAL INFORMATION ONLY AND DO NOT REPRESENT ANY PARTICULAR HOME ON THE MARKET AT THIS TIME. SQUARE FOOTAGE IS APPROXIMATE.